



## Collar-Cuff-Yoke Press

Model 392SCS/SCSY



392SCS

- Two-hand control
- Nickel-plated heads reduce heat loss, saves energy
- Dual-cylinder design provides maximum pressing force
- 392SCS Designed to press cuffs and collar in one lay
- 392SCSY Designed to press cuffs, collar and yoke in one lay

[www.forentausa.com](http://www.forentausa.com)

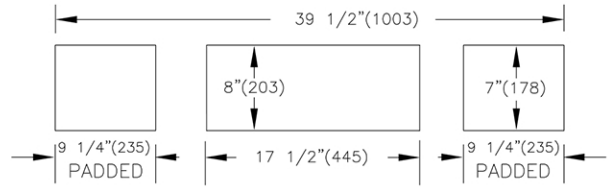
Tel: 423-586-5370 • Email: [info@forentausa.com](mailto:info@forentausa.com)

Made in USA

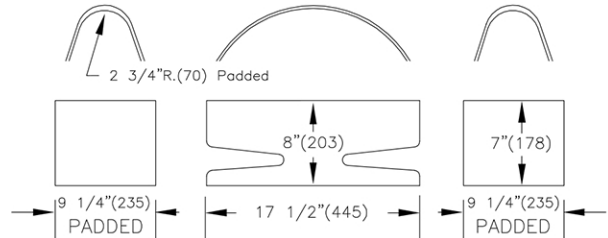
# Specifications

Models 392SCS/SCSY

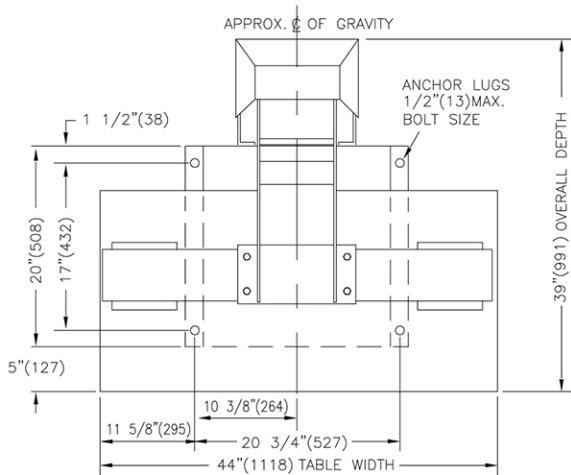
|                          |  |                         |
|--------------------------|--|-------------------------|
| Electrical connections   |  | 392SCS<br>392SCSY       |
| Voltage                  | 120V 1PH 50/60Hz .5amps                      | Standard<br>optional    |
| Voltage                  | 230V 1PH 50/60Hz .25amps                     |                         |
| Steam and Air connection |  |                         |
| Steam Inlet              | NPT  | 1/2"                    |
| Steam Outlet             | NPT  | 1/2"                    |
| Rec. steam pressure      | PSIG<br>kPa                                  | 110-125<br>758-861      |
| Steam consumption        | BHP<br>kg/hr<br>lb/hr                        | 1<br>15.6<br>34.5       |
| Compressed air           | NPT  | 3/8"                    |
| Air consumption          | free air/cycle<br>free air/cycle             | 0.8 CU.FT.<br>27 liters |
| Rec. air pressure        | PSIG<br>kPa                                  | 60<br>414               |
| Water connection         | NPT  | 1/4"                    |
| Weight (crated)          |  |                         |
| Shipping                 | lbs<br>kg                                    | 708<br>321              |
| 1 Control Push Buttons   | 4 Steam Outlet connection                    |                         |
| 2 Steam connection       | 5 Electrical Connection                      |                         |
| 3 Air connection         | 6 Water Connection<br>(for water spray only) |                         |



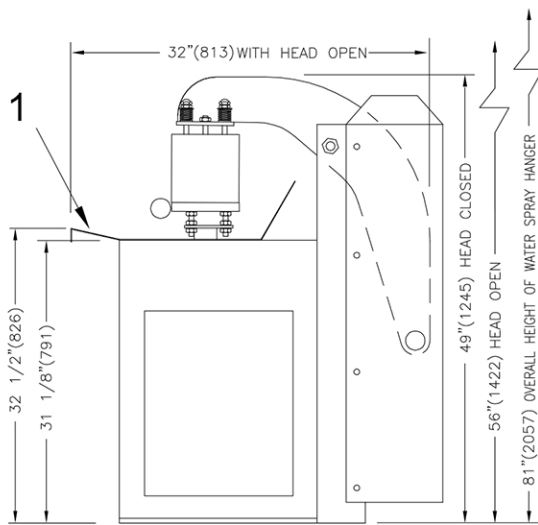
**392SCS Buck Dimensions**



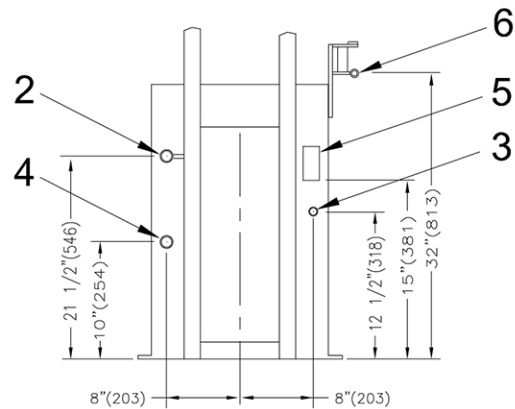
**392SCSY Buck Dimensions**



**Top View**



**Right Side View**



**Partial Rear View**

## Detail Line Drawing (millimeters shown in parentheses)