

Uncompromised Versatility In A Manual Pressing Machine

Based on our world famous
X design.

Benefits

- Total operator control
- Rugged, long-life construction
- Fingertip operation - low fatigue, high productivity
- Simple installation/maintenance (no air or electricity)
- Widest variety of options available
- Easy to use

Heavy-duty steel construction and re-engineered cast iron "Y" piece (yoke) provide fast, easy adjustment and long-life durability. Self-lubricating bearings result in improved linkage performance and reduced operator fatigue. A newly-designed, larger Formica table facilitates operator comfort, snag-free finishing and easy clean up.

Options

- Wide selection of head and buck shapes.
- Heads available in cast aluminum or polished hot heads.
- Steam or steam electric irons and stands.
- Spray gun and condenser.
- Iron low boy and swing-away sleeve board.



FX 42

Versatílidad Inflexible En Una Prensa Mecanica

Basada En Nuestro Diseño
"X" Mundialmente Famoso

Beneficios:

- Controlada totalmente por el operador
- Construcción pesada - larga vida
- Operación liviana, fatiga mínima, alta producción
- Fácil instalación, mantenimiento mínimo (no requiere aire o electricidad)
- Gran variedades y alternativas disponibles
- Fácil de usar

Construcción pesada con yunta /yugo de hierro colado totalmente rediseñada la cual provee fácil ajuste y larga vida. Coginetes auto-lubricados lo cual permite mejor y suave funcionamiento de las uniones resultando en menos fatiga al operador. Mesa de Formica rediseñada, más amplia la cual facilita más comodidad al operario, sin protuberancias ni ganchos para fácil limpieza y mantenimiento.

Opciones:

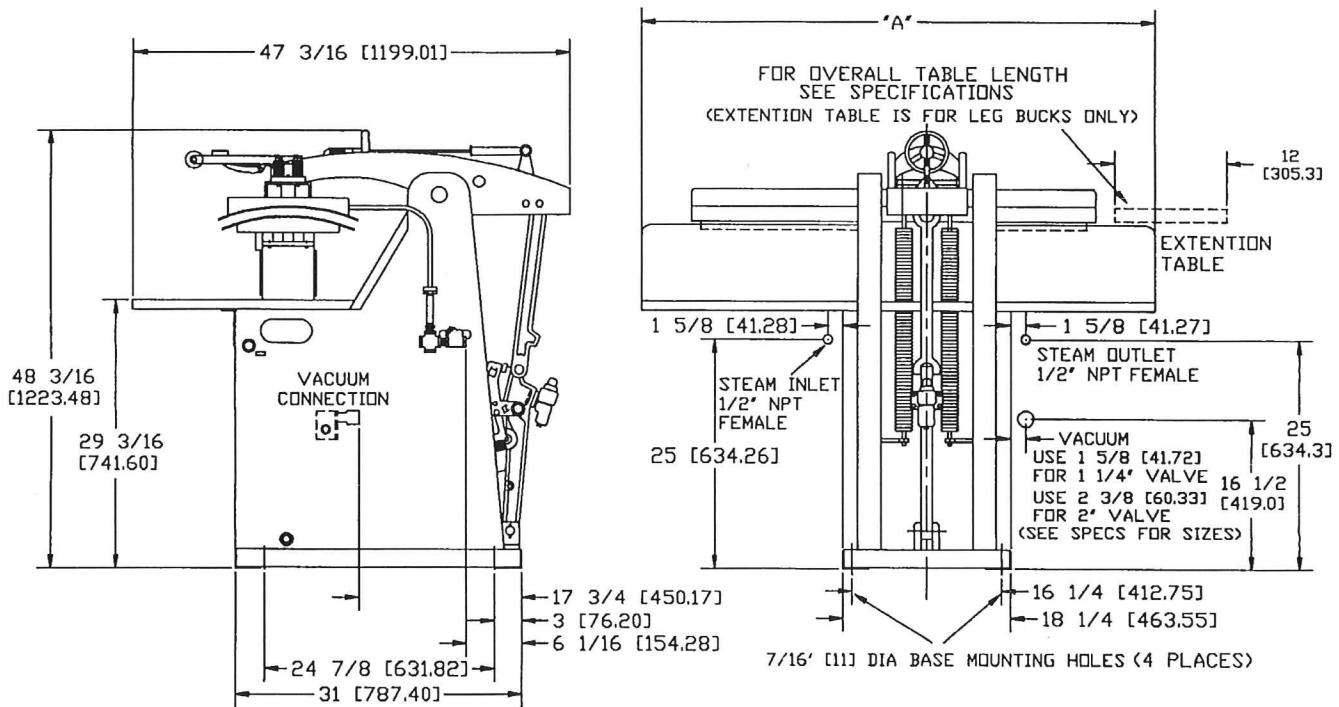
- Gran selección de cabezales y mesas.
- Se suplen con cabezales de aluminio fundido o con cabezales calientes.
- Planchas de vapor o vapor/eléctrica y mesas.
- Pistola de agua y condensador.
- Separador de electricidad/vapor (Lowboy) mesa oscilante para planchar mangas.

FX SERIES (La Serie FX)

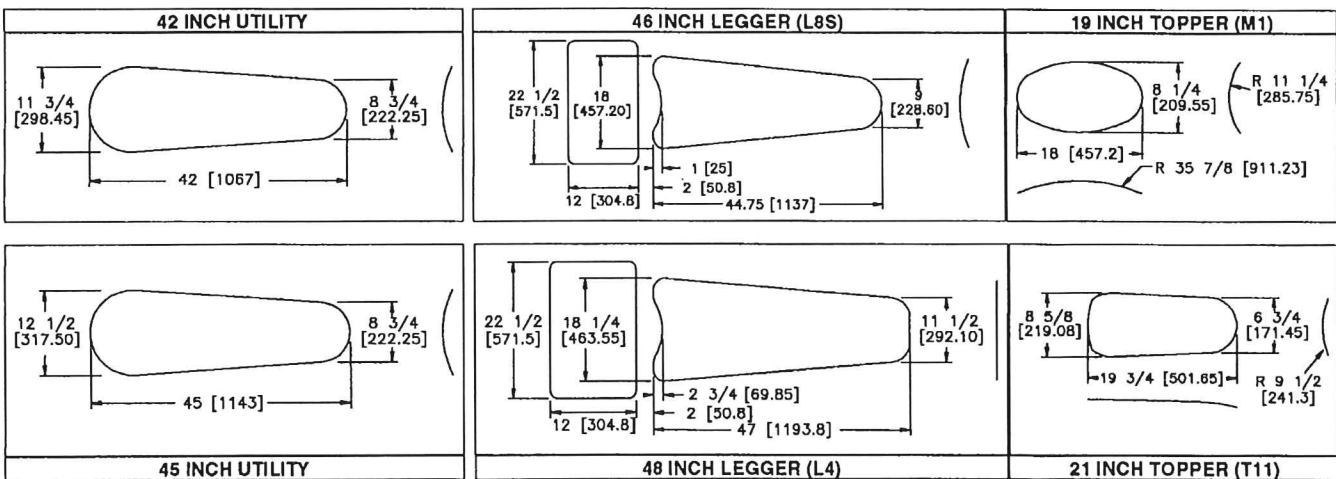


Specifications FX Series

MODEL	FX 42	FX 45	FX L4	FX 46 (L8S)	FX T11	FX 19 (M1)
Steam Usage @ 80 PSIG	30 LB/HR (13.6 KG/HR)	30 LB/HR (13.6 KG/HR)	28 LB/HR (12.7 KG/HR)	28 LB/HR (12.7 KG/HR)	22 LB/HR (10 KG/HR)	22 LB/HR (10 KG/HR)
Max. Steam Pressure	125 PSI (862 K Pa)	125 PSI (862 K Pa)	125 PSI (862 K Pa)	125 PSI (862 K Pa)	125 PSI (862 K Pa)	125 PSI (862 K Pa)
Table Length Dimension "A"	56 IN (1422 MM)	56 IN (1422 MM)	56 IN (1422 MM)	56 IN (1422 MM)	36 IN (914 MM)	36 IN (914 MM)
Vacuum Size Female NPT	1-1/4 INCH	1-1/4 INCH	2 INCH	2 INCH	1-1/4 INCH	1-1/4 INCH
Net Machine Weight	595 LB (270 KG)	610 LB (276 KG)	660 LB (300 KG)	645 LB (292 KG)	485LB (219 KG)	480 LB (217 KG)
Shipping Weight	660 LB (300 KG)	675 LB (305 KG)	725 LB (328 KG)	710 LB (321 KG)	545 LB (247KG)	540 LB (244KG)



BUCK DIMENSIONS (Before Padding)



HOFFMAN/NEW YORKER, INC.

Equipment is subject to manufacturer's standard warranty. Accuracy of illustration and description of equipment shown herein applies to product as manufactured at time of publication.

Copyright 1994. Hoffman/New Yorker, Inc. Printed in U.S.A. 1M894

46 Clinton Place Hackensack, NJ 07601 USA

Phone: 201-488-1800 Fax: 201-488-4480

www.hoffman-newyorker.com